



LOCATION.
commercial real estate

**1304
THELMA
KELLER AVE**

EFFINGHAM, IL

**2,456 SF
AVAILABLE**

verizon

BRATANZ

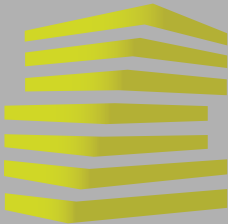
**CASH
STORE**

GREAT CLIPS

OneMain
Financial

**2,456 SF PRIME RETAIL
AVAILABLE FOR LEASE**





1304 THELMA KELLER

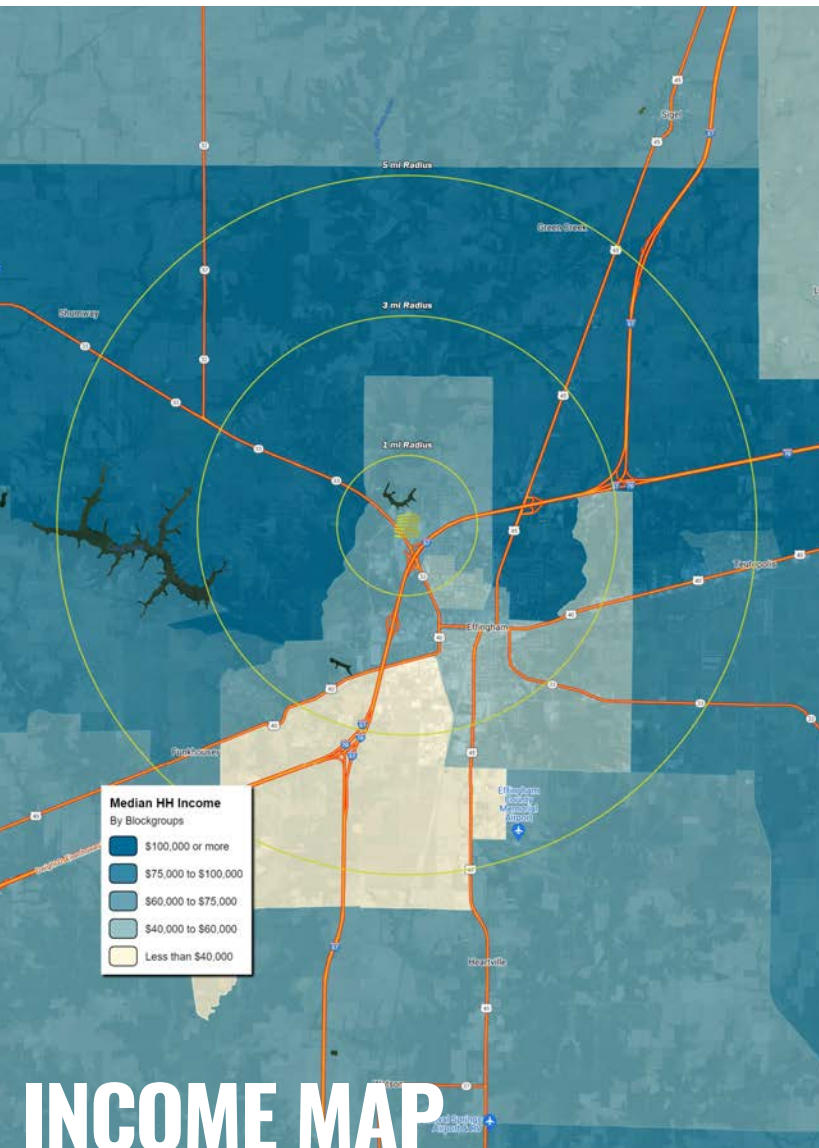
NEIGHBORHOOD VIBE

BEN WEIS

314.818.1563 (OFFICE)

314.629.6532 (MOBILE)

Ben@LocationCRE.com



INCOME MAP

TRADE AREA OVERVIEW

Effingham is the largest city in, and the county seat of, Effingham County, Illinois.

Effingham's unique location and transportation system has been the calling card for numerous industrial and commercial companies which have located in its business parks and retail areas, along with numerous shopping and recreational opportunities and over 17 hotels and 65 restaurants. In fact, the City's daytime population doubles because of this vast amount of development.

Effingham is a micropolitan center which draws workers from an eight county area and has a trade population of 175,000. Being a regional center, people travel to Effingham to work, shop and for their healthcare needs.

Major employers in Effingham include HSHS St. Anthony Hospital (864), Heartland Dental (600), Quad Graphics Effingham (560), The Equity (475), Patterson Companies, Inc. (450), and Stephens Industries Inc. (450).

Effingham was ranked as the 13th best place to start a business in Illinois, according to NerdWallet. The city's 1,494 businesses maintain average revenue per business of \$1,559,763. Effingham also boasts a high percentage of businesses with paid employees (45.38%). Effingham was also ranked #1 by SmartAsset as the Best Place to Retire in Illinois.

DEMOGRAPHICS

| | 1 mile | 3 miles | 5 miles |
|----------------------|-----------------|-----------------|-----------------|
| POPULATION | 2,381 | 13,243 | 19,201 |
| HOUSEHOLDS | 1,040 | 5,523 | 7,986 |
| EMPLOYEES | 3,391 | 13,953 | 17,069 |
| MED HH INCOME | \$64,506 | \$76,232 | \$80,026 |

AREA RETAIL | RESTAURANTS

Walmart

SMOOTHIE KING

Bath & Body Works

GameStop

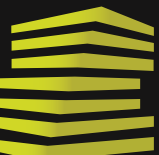
maurices

HIBBETT SPORTS
GAME TESTED. ATHLETE APPROVED.

MENARDS

McDonald's

KOHL'S



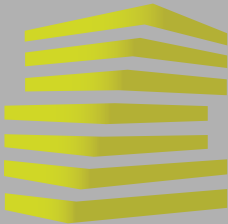
LOCATION.

commercial real estate

f @ in REALTY RESOURCES MEMBER

www.LocationCRE.com

THE INFORMATION IN THIS FLYER HAS BEEN OBTAINED FROM SOURCES BELIEVED RELIABLE. WHILE WE DO NOT DOUBT ITS ACCURACY, WE HAVE NOT VERIFIED IT AND MAKE NO GUARANTEE ABOUT IT. IT IS YOUR RESPONSIBILITY TO INDEPENDENTLY CONFIRM ITS ACCURACY AND COMPLETENESS. ANY PROJECTIONS, OPINIONS, ASSUMPTIONS OR ESTIMATES USED ARE FOR EXAMPLE ONLY AND DO NOT REPRESENT THE CURRENT OR FUTURE PERFORMANCE OF THE PROPERTY. THE VALUE OF THIS TRANSACTION TO YOU DEPENDS ON TAX AND OTHER FACTORS WHICH SHOULD BE EVALUATED BY YOUR TAX, FINANCIAL AND LEGAL ADVISORS. YOU AND YOUR ADVISORS SHOULD CONDUCT A CAREFUL, INDEPENDENT INVESTIGATION OF THE PROPERTY TO DETERMINE TO YOUR SATISFACTION THE SUITABILITY OF THE PROPERTY FOR YOUR NEEDS.



1304 THELMA KELLER

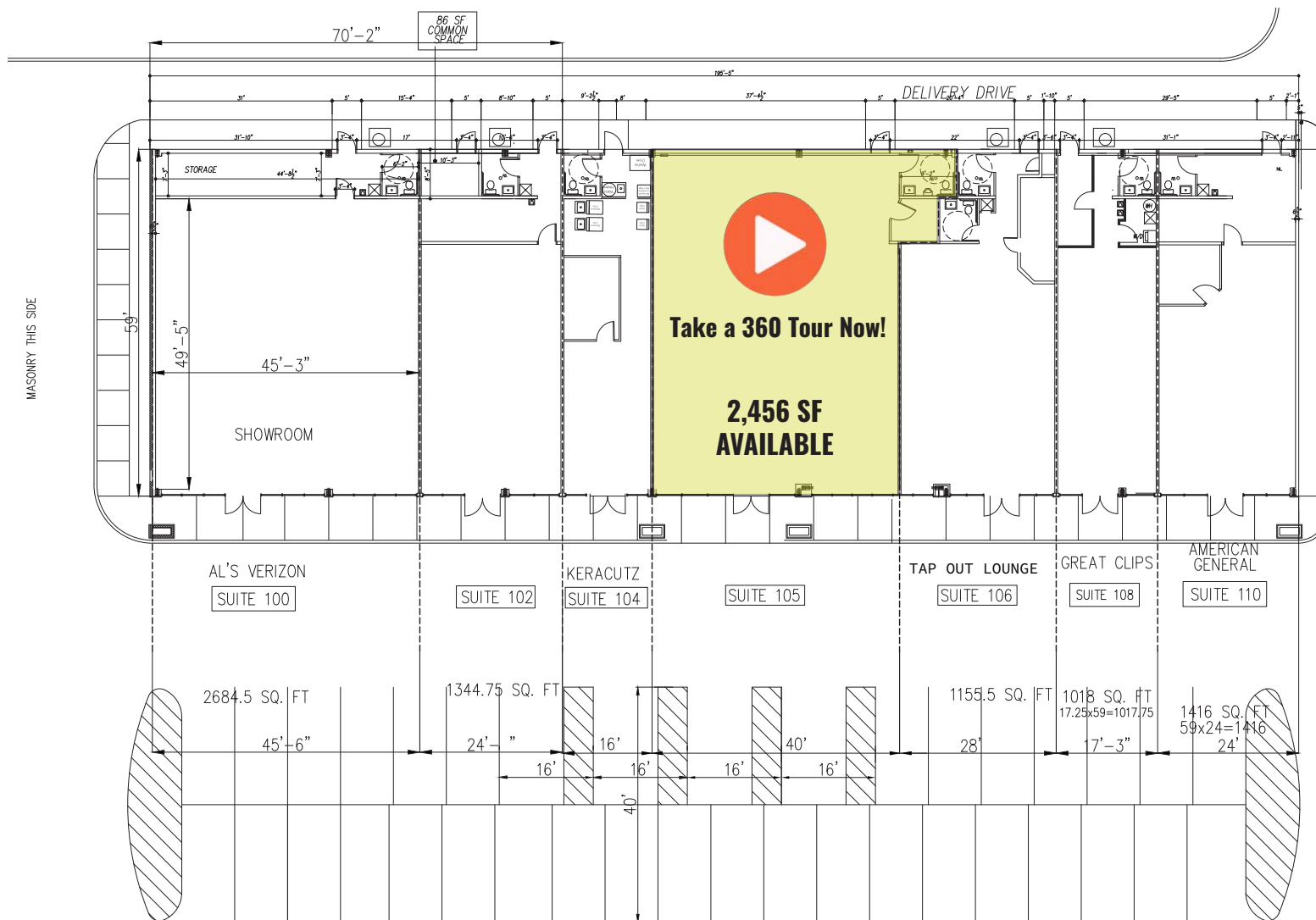
SITE PLAN

BEN WEIS

314.818.1563 (OFFICE)

314.629.6532 (MOBILE)

Ben@LocationCRE.com

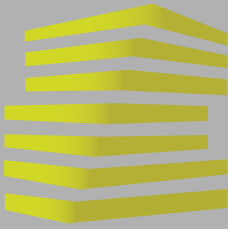


LOCATION.
commercial real estate



www.LocationCRE.com

THE INFORMATION IN THIS FLYER HAS BEEN OBTAINED FROM SOURCES BELIEVED RELIABLE. WHILE WE DO NOT DOUBT ITS ACCURACY, WE HAVE NOT VERIFIED IT AND MAKE NO GUARANTEE ABOUT IT. IT IS YOUR RESPONSIBILITY TO INDEPENDENTLY CONFIRM ITS ACCURACY AND COMPLETENESS. ANY PROJECTIONS, OPINIONS, ASSUMPTIONS OR ESTIMATES USED ARE FOR EXAMPLE ONLY AND DO NOT REPRESENT THE CURRENT OR FUTURE PERFORMANCE OF THE PROPERTY. THE VALUE OF THIS TRANSACTION TO YOU DEPENDS ON TAX AND OTHER FACTORS WHICH SHOULD BE EVALUATED BY YOUR TAX, FINANCIAL AND LEGAL ADVISORS. YOU AND YOUR ADVISORS SHOULD CONDUCT A CAREFUL, INDEPENDENT INVESTIGATION OF THE PROPERTY TO DETERMINE TO YOUR SATISFACTION THE SUITABILITY OF THE PROPERTY FOR YOUR NEEDS.



1304 THELMA KELLER

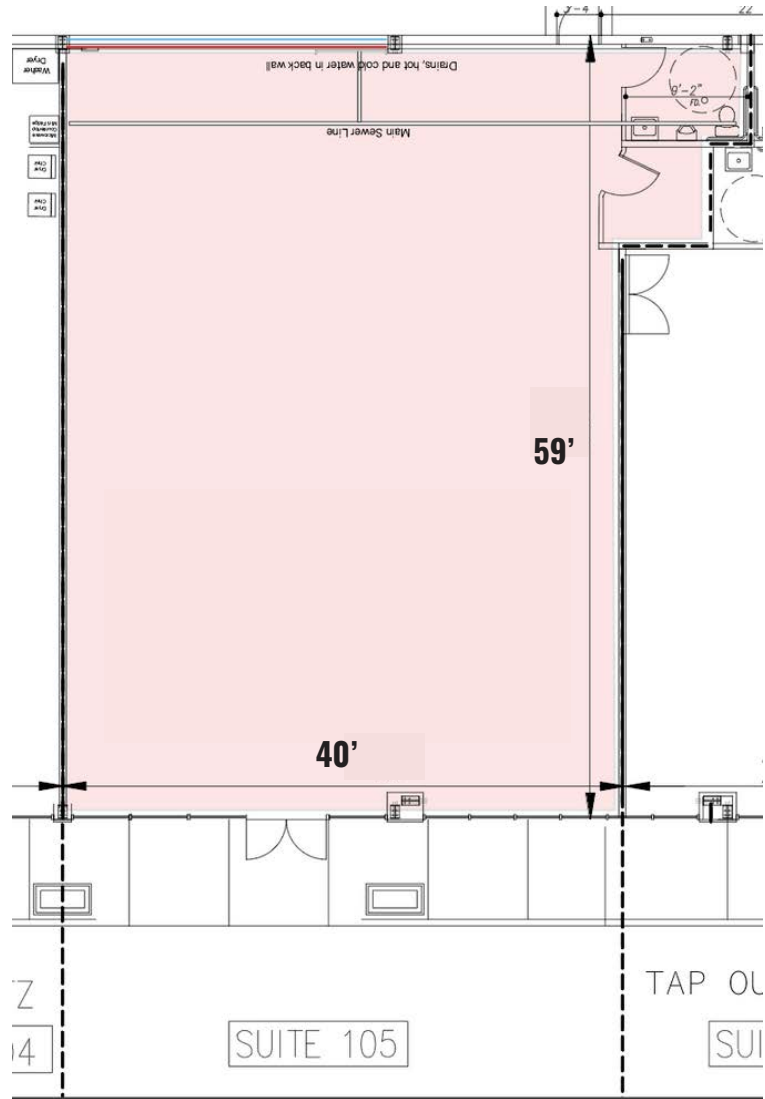
FLOOR PLAN

BEN WEIS

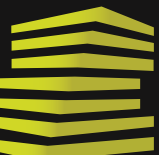
314.818.1563 (OFFICE)

314.629.6532 (MOBILE)

Ben@LocationCRE.com



- **2,456 SF AVAILABLE FOR LEASE**
- **CENTER IS CONVENIENTLY LOCATED IN FRONT OF WALMART SUPERCENTER**
- **COTENANTS AND NEARBY RETAIL INCLUDE: MAURICES, HIBBETT SPORTS, FAMOUS FOOTWEAR, SMOOTHIE KING, KOHLS, WALMART, AND MEIJER**
- **PRIME SIGNAGE AVAILABILITY**
- **LESS THAN 0.5 MILES OFF INTERSTATE 57 AND INTERSTATE 70**
- **BASE RENT \$18.00 PSF NNN**

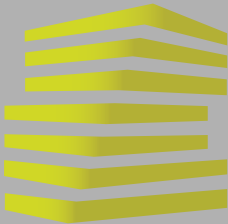


LOCATION.
commercial real estate



www.LocationCRE.com

THE INFORMATION IN THIS FLYER HAS BEEN OBTAINED FROM SOURCES BELIEVED RELIABLE. WHILE WE DO NOT DOUBT ITS ACCURACY, WE HAVE NOT VERIFIED IT AND MAKE NO GUARANTEE ABOUT IT. IT IS YOUR RESPONSIBILITY TO INDEPENDENTLY CONFIRM ITS ACCURACY AND COMPLETENESS. ANY PROJECTIONS, OPINIONS, ASSUMPTIONS OR ESTIMATES USED ARE FOR EXAMPLE ONLY AND DO NOT REPRESENT THE CURRENT OR FUTURE PERFORMANCE OF THE PROPERTY. THE VALUE OF THIS TRANSACTION TO YOU DEPENDS ON TAX AND OTHER FACTORS WHICH SHOULD BE EVALUATED BY YOUR TAX, FINANCIAL AND LEGAL ADVISORS. YOU AND YOUR ADVISORS SHOULD CONDUCT A CAREFUL, INDEPENDENT INVESTIGATION OF THE PROPERTY TO DETERMINE TO YOUR SATISFACTION THE SUITABILITY OF THE PROPERTY FOR YOUR NEEDS.



1304 THELMA KELLER

ZOOM AERIAL

BEN WEIS

314.818.1563 (OFFICE)

314.629.6532 (MOBILE)

Ben@LocationCRE.com



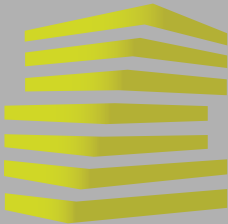
LOCATION.

commercial real estate



www.LocationCRE.com

THE INFORMATION IN THIS FLYER HAS BEEN OBTAINED FROM SOURCES BELIEVED RELIABLE. WHILE WE DO NOT DOUBT ITS ACCURACY, WE HAVE NOT VERIFIED IT AND MAKE NO GUARANTEE ABOUT IT. IT IS YOUR RESPONSIBILITY TO INDEPENDENTLY CONFIRM ITS ACCURACY AND COMPLETENESS. ANY PROJECTIONS, OPINIONS, ASSUMPTIONS OR ESTIMATES USED ARE FOR EXAMPLE ONLY AND DO NOT REPRESENT THE CURRENT OR FUTURE PERFORMANCE OF THE PROPERTY. THE VALUE OF THIS TRANSACTION TO YOU DEPENDS ON TAX AND OTHER FACTORS WHICH SHOULD BE EVALUATED BY YOUR TAX, FINANCIAL AND LEGAL ADVISORS. YOU AND YOUR ADVISORS SHOULD CONDUCT A CAREFUL, INDEPENDENT INVESTIGATION OF THE PROPERTY TO DETERMINE TO YOUR SATISFACTION THE SUITABILITY OF THE PROPERTY FOR YOUR NEEDS.



1304 THELMA KELLER

MARKET AERIAL

BEN WEIS

314.818.1563 (OFFICE)

314.629.6532 (MOBILE)

Ben@LocationCRE.com



LOCATION.

commercial real estate



www.LocationCRE.com

THE INFORMATION IN THIS FLYER HAS BEEN OBTAINED FROM SOURCES BELIEVED RELIABLE. WHILE WE DO NOT DOUBT ITS ACCURACY, WE HAVE NOT VERIFIED IT AND MAKE NO GUARANTEE ABOUT IT. IT IS YOUR RESPONSIBILITY TO INDEPENDENTLY CONFIRM ITS ACCURACY AND COMPLETENESS. ANY PROJECTIONS, OPINIONS, ASSUMPTIONS OR ESTIMATES USED ARE FOR EXAMPLE ONLY AND DO NOT REPRESENT THE CURRENT OR FUTURE PERFORMANCE OF THE PROPERTY. THE VALUE OF THIS TRANSACTION TO YOU DEPENDS ON TAX AND OTHER FACTORS WHICH SHOULD BE EVALUATED BY YOUR TAX, FINANCIAL AND LEGAL ADVISORS. YOU AND YOUR ADVISORS SHOULD CONDUCT A CAREFUL, INDEPENDENT INVESTIGATION OF THE PROPERTY TO DETERMINE TO YOUR SATISFACTION THE SUITABILITY OF THE PROPERTY FOR YOUR NEEDS.