

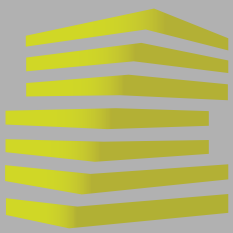


# SUGAR PINES SHOPPING CENTER

3 5 0 1 - 3 5 3 3 D U N N R O A D

FLORISSANT, MO





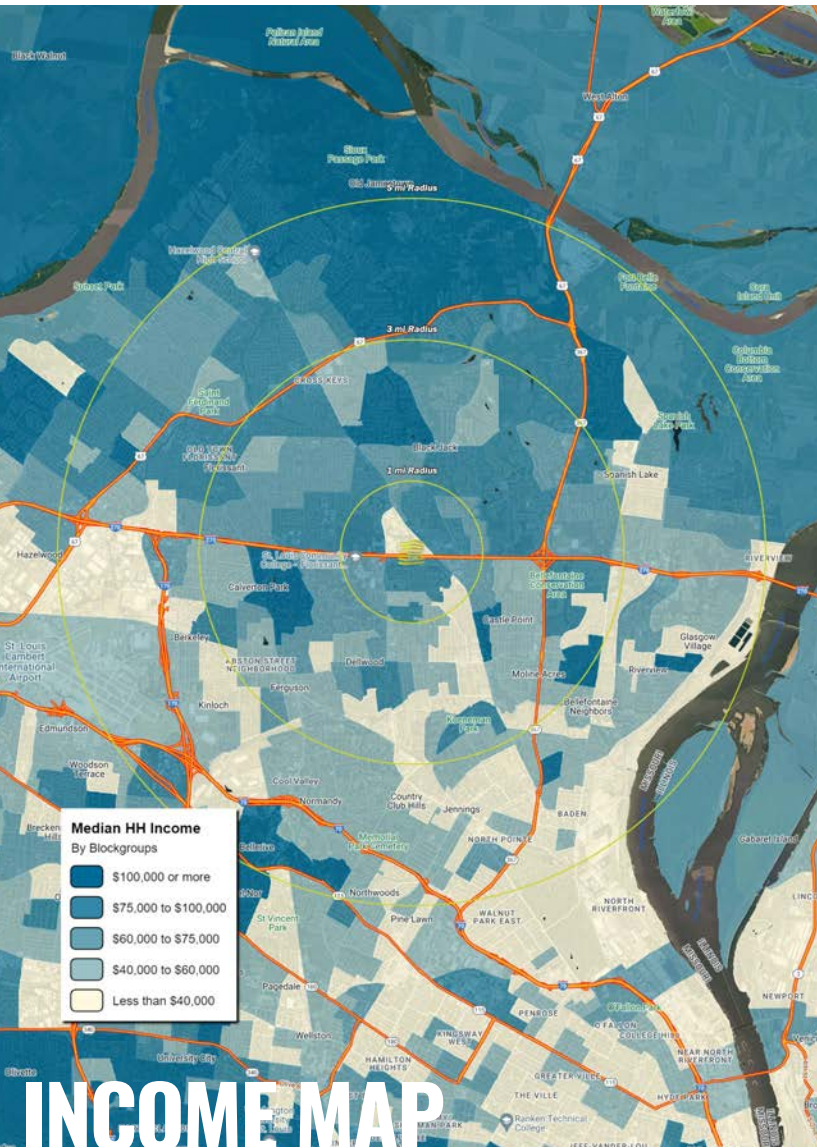
# SUGAR PINES SHOPPING CENTER

## NEIGHBORHOOD VIBE

TONY MOON | ALEX APTER

314.818.1567 (DIRECT)  
314.560.0781 (MOBILE)  
Tony@LocationCRE.com

314.818.1562 (OFFICE)  
314.488.5900 (MOBILE)  
Alex@LocationCRE.com



### TRADE AREA OVERVIEW

FLORISSANT, A SECOND-RING SUBURB OF ST. LOUIS, IS LOCATED IN NORTH ST. LOUIS COUNTY APPROXIMATELY 15 MILES NORTHWEST OF DOWNTOWN ST. LOUIS. IT IS THE LARGEST CITY IN NORTH ST. LOUIS COUNTY.

FLORISSANT HAS A RICH HISTORY, DATING BACK TO THE LATE 1700S WHEN FRENCH COLONISTS SETTLED IN THE AREA. THE CITY PLAYED AN IMPORTANT ROLE IN THE LEWIS AND CLARK EXPEDITION, AND WAS A MAJOR HUB FOR TRADE AND TRANSPORTATION IN THE 1800S. TODAY, FLORISSANT IS KNOWN FOR ITS HISTORIC ARCHITECTURE, WHICH INCLUDES SEVERAL WELL-PRESERVED EXAMPLES OF 19TH-CENTURY HOMES AND BUILDINGS.

THE CITY OF FLORISSANT IS HOME TO SEVERAL PARKS AND RECREATIONAL AREAS, INCLUDING THE FLORISSANT VALLEY PARK, WHICH FEATURES A COMMUNITY CENTER, PLAYGROUNDS, AND SPORTS FIELDS. THE CITY ALSO HOSTS SEVERAL COMMUNITY EVENTS THROUGHOUT THE YEAR, INCLUDING THE FLORISSANT VALLEY OF FLOWERS FESTIVAL, THE OLD TOWN FALL FESTIVAL, AND A FARMERS' MARKET.

FLORISSANT HAS MAJOR EMPLOYERS IN INDUSTRIES SUCH AS HEALTHCARE, MANUFACTURING, AND RETAIL. THE CITY IS ALSO KNOWN FOR ITS STRONG EDUCATION SYSTEM, WITH SEVERAL PUBLIC AND PRIVATE SCHOOLS SERVING STUDENTS FROM KINDERGARTEN THROUGH HIGH SCHOOL. THE CITY IS HOME TO THE ST. LOUIS COMMUNITY COLLEGE-FLORISSANT VALLEY CAMPUS, WHICH OFFERS A VARIETY OF DEGREE AND CERTIFICATE PROGRAMS.

IN ADDITION TO ITS ECONOMIC AND EDUCATIONAL OPPORTUNITIES, FLORISSANT IS A DIVERSE AND WELCOMING COMMUNITY WITH A STRONG SENSE OF CIVIC PRIDE. NESTLED IN THE MIDDLE OF THE CITY IS HISTORIC OLD TOWN FLORISSANT, COMBINING VINTAGE NOSTALGIA WITH A FUN, BUSTLING COMMUNITY. STORES, RESTAURANTS AND OTHER BUSINESSES ARE HOUSED IN CHARMING HISTORIC BUILDINGS, AND ROWS OF RESTORED CENTURY HOMES RUN ALONG PEACEFUL TREE-LINED STREETS. WITH AFFORDABLE HOUSING AND GOOD SCHOOLS, FLORISSANT IS A PROGRESSIVE AND THRIVING TOWN WITH A REPUTATION FOR BEING "WARM AND FRIENDLY."

### DEMOGRAPHICS

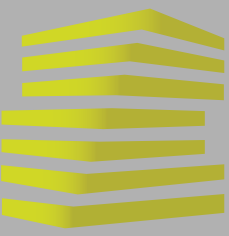
	1 mile	3 miles	5 miles
<b>POPULATION</b>	9,702	94,539	223,368
<b>HOUSEHOLDS</b>	4,099	38,034	90,250
<b>EMPLOYEES</b>	3,329	25,589	60,887
<b>MED HH INCOME</b>	\$62,124	\$62,575	\$59,811

### AREA RETAIL | RESTAURANTS



www.LocationCRE.com

THE INFORMATION IN THIS FLYER HAS BEEN OBTAINED FROM SOURCES BELIEVED RELIABLE. WHILE WE DO NOT DOUBT ITS ACCURACY, WE HAVE NOT VERIFIED IT AND MAKE NO GUARANTEE ABOUT IT. IT IS YOUR RESPONSIBILITY TO INDEPENDENTLY CONFIRM ITS ACCURACY AND COMPLETENESS. ANY PROJECTIONS, OPINIONS, ASSUMPTIONS OR ESTIMATES USED ARE FOR EXAMPLE ONLY AND DO NOT REPRESENT THE CURRENT OR FUTURE PERFORMANCE OF THE PROPERTY. THE VALUE OF THIS TRANSACTION TO YOU DEPENDS ON TAX AND OTHER FACTORS WHICH SHOULD BE EVALUATED BY YOUR TAX, FINANCIAL AND LEGAL ADVISORS. YOU AND YOUR ADVISORS SHOULD CONDUCT A CAREFUL, INDEPENDENT INVESTIGATION OF THE PROPERTY TO DETERMINE TO YOUR SATISFACTION THE SUITABILITY OF THE PROPERTY FOR YOUR NEEDS.



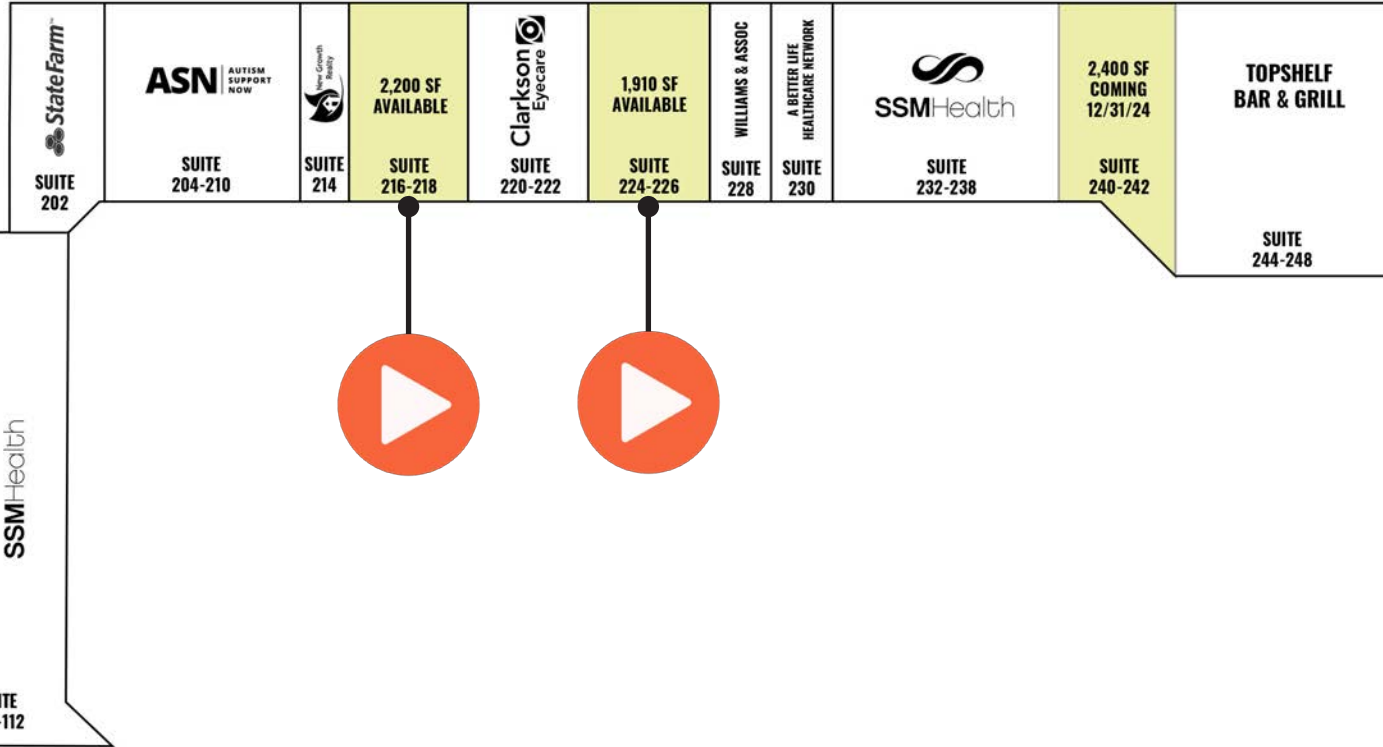
# SUGAR PINES SHOPPING CENTER

## SITE PLAN

TONY MOON | ALEX APTER

314.818.1567 (DIRECT)  
314.560.0781 (MOBILE)  
Tony@LocationCRE.com

314.818.1562 (OFFICE)  
314.488.5900 (MOBILE)  
Alex@LocationCRE.com



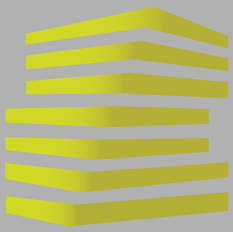
SUGAR PINES TENANT ROSTER		
102-112	SSM HEALTH	5,451
202	STATE FARM	1,200
204-210	AUTISM SUPPORT NOW	5,186
214	NEW GROWTH REALTY	1,100
216-218	AVAILABLE	2,200
220-222	CLARKSON EYECARE	1,132
224-226	AVAILABLE	1,910
228	WILLIAMS & ASSOC	1,390
230	A BETTER LIFE HEALTHCARE NETWORK	1,100
232-238	SSM SELECT REHAB	4,400
240-242	Coming Available (12/31/24)	2,400
244	TOPSHELF BAR & GRILL	4,550

- JOIN SSM HEALTH, CLARKSON EYECARE, AND STATE FARM INSURANCE AT SUGAR PINES SHOPPING CENTER IN FLORISSANT, MO
- 2,200 SF SUITE AVAILABLE FOR LEASE AND SUITABLE FOR OFFICE, MEDICAL, OR RETAIL TENANTS
- AMPLE PARKING AND EXCELLENT VISIBILITY TO OVER 126,000 VPD ON I-270
- BUILDING SIGNAGE AVAILABLE
- ADA ACCESSIBLE
- LOCATED ALONG DENSE RETAIL CORRIDOR IN NORTH COUNTY WITH NEARBY NATIONAL TENANTS SUCH AS HOME DEPOT (564K ANNUAL VISITS), WALMART (1.5M ANNUAL VISITS), SAM'S (1.3M ANNUAL VISITS), AND ALDI (244.8K ANNUAL VISITS) \*VISITOR DATA PROVIDED BY PLACER.AI
- CALL BROKER FOR PRICING



www.LocationCRE.com

THE INFORMATION IN THIS FLYER HAS BEEN OBTAINED FROM SOURCES BELIEVED RELIABLE. WHILE WE DO NOT DOUBT ITS ACCURACY, WE HAVE NOT VERIFIED IT AND MAKE NO GUARANTEE ABOUT IT. IT IS YOUR RESPONSIBILITY TO INDEPENDENTLY CONFIRM ITS ACCURACY AND COMPLETENESS. ANY PROJECTIONS, OPINIONS, ASSUMPTIONS OR ESTIMATES USED ARE FOR EXAMPLE ONLY AND DO NOT REPRESENT THE CURRENT OR FUTURE PERFORMANCE OF THE PROPERTY. THE VALUE OF THIS TRANSACTION TO YOU DEPENDS ON TAX AND OTHER FACTORS WHICH SHOULD BE EVALUATED BY YOUR TAX, FINANCIAL AND LEGAL ADVISORS. YOU AND YOUR ADVISORS SHOULD CONDUCT A CAREFUL, INDEPENDENT INVESTIGATION OF THE PROPERTY TO DETERMINE TO YOUR SATISFACTION THE SUITABILITY OF THE PROPERTY FOR YOUR NEEDS.



# SUGAR PINES SHOPPING CENTER

## PHOTOS

TONY MOON

ALEX APTER

314.818.1567 (DIRECT)

314.560.0781 (MOBILE)

Tony@LocationCRE.com

314.818.1562 (OFFICE)

314.488.5900 (MOBILE)

Alex@LocationCRE.com



**LOCATION.**  
commercial real estate

f @ in REALTY RESOURCES MEMBER

[www.LocationCRE.com](http://www.LocationCRE.com)

THE INFORMATION IN THIS FLYER HAS BEEN OBTAINED FROM SOURCES BELIEVED RELIABLE. WHILE WE DO NOT DOUBT ITS ACCURACY, WE HAVE NOT VERIFIED IT AND MAKE NO GUARANTEE ABOUT IT. IT IS YOUR RESPONSIBILITY TO INDEPENDENTLY CONFIRM ITS ACCURACY AND COMPLETENESS. ANY PROJECTIONS, OPINIONS, ASSUMPTIONS OR ESTIMATES USED ARE FOR EXAMPLE ONLY AND DO NOT REPRESENT THE CURRENT OR FUTURE PERFORMANCE OF THE PROPERTY. THE VALUE OF THIS TRANSACTION TO YOU DEPENDS ON TAX AND OTHER FACTORS WHICH SHOULD BE EVALUATED BY YOUR TAX, FINANCIAL AND LEGAL ADVISORS. YOU AND YOUR ADVISORS SHOULD CONDUCT A CAREFUL, INDEPENDENT INVESTIGATION OF THE PROPERTY TO DETERMINE TO YOUR SATISFACTION THE SUITABILITY OF THE PROPERTY FOR YOUR NEEDS.

