

10,513 SF FREESTANDING BUILDING ON 1.45 ACRES

3 1 4 4 S . K I N G S H I G H W A Y B L V D

ST. LOUIS, MO



LOCATION.
commercial real estate



3144 S. KINGSHIGHWAY BLVD

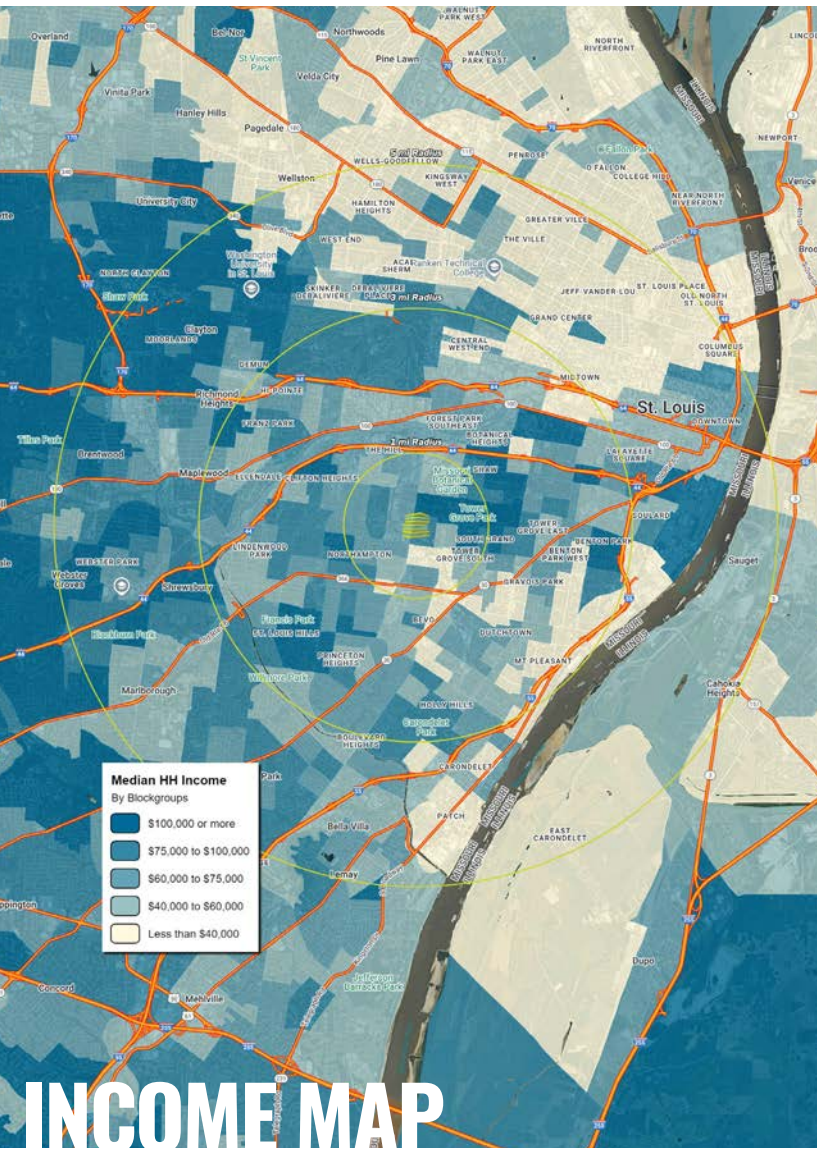
NEIGHBORHOOD VIBE

JOE LODES

314.818.1564 (OFFICE)
314.852.8234 (MOBILE)
Joe@LocationCRE.com

KEVIN SHAPIRO

314.818.1550 (OFFICE)
314.283.4691 (MOBILE)
Kevin@LocationCRE.com



TRADE AREA OVERVIEW

True to its name, South City is the southern section of St. Louis City, extending from the Mississippi River to the east, the Carondelet area to the south, River Des Perre to the west, and I-44 to the north. South City boasts a diverse group of neighborhoods with something for everyone and no shortage of activities.

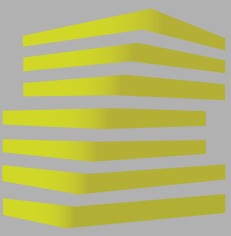
Tower Grove South is a neighborhood of St. Louis, Missouri. Formerly known as Oak Hill, Tower Grove South is bounded by Arsenal Street on the north, Chippewa Street on the south, Kingshighway Boulevard on the west, and Grand Boulevard on the east. The majority of the neighborhood was built following the extension of streetcar lines from downtown St. Louis.

Commercial development in the neighborhood is concentrated on Grand Boulevard in the east and Morganford Road in the west of the neighborhood. There are also scatterings of commercial and mixed use buildings on interior intersections. Tower Grove South is a major urban success story of the last 15 years. It's got the makings of the perfect St. Louis neighborhood: a stunning park within walking distance, 2 major commercial districts, fabulous architecture and a strong neighborhood association. The neighborhood has a progressive feel.

DEMOGRAPHICS

	1 mile	3 mile	5 mile
POPULATION	17,460	168,430	356,188
HOUSEHOLDS	9,599	85,359	173,035
EMPLOYEES	9,255	79,499	239,858
MED HH INCOME	\$69,814	\$64,550	\$67,834

AREA RETAIL | RESTAURANTS



3144 S. KINGSHIGHWAY BLVD

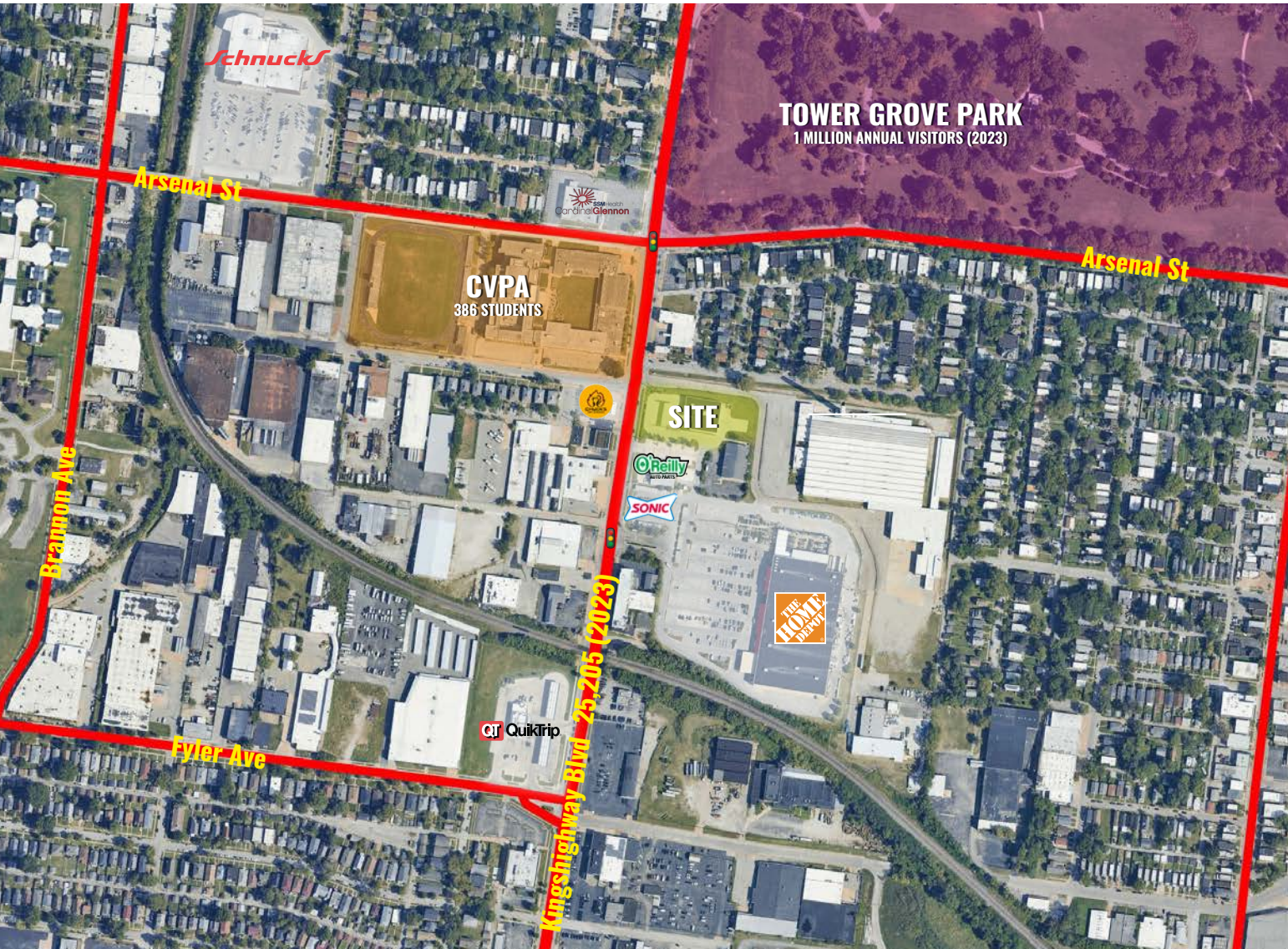
ZOOM AERIAL + DETAILS

JOE LODES

314.818.1564 (OFFICE)
314.852.8234 (MOBILE)
Joe@LocationCRE.com

KEVIN SHAPIRO

314.818.1550 (OFFICE)
314.283.4691 (MOBILE)
Kevin@LocationCRE.com



- 10,513 SF FREESTANDING BUILDING SITTING ON 1.45 ACRES IN SOUTH ST. LOUIS CITY AVAILABLE FOR LEASE
- EXCELLENT VISIBILITY TO OVER 25,000 VPD ON S. KINGSHIGHWAY BLVD
- CONVENIENTLY LOCATED NEAR THE INTERSECTION OF S. KINGSHIGHWAY BLVD AND ARSENAL ST
- EASY ACCESS VIA SIGNALIZED ENTRANCE TO HOME DEPOT (910K ANNUAL VISITS)
- NEIGHBORING AREA RETAIL INCLUDES HOME DEPOT (910K ANNUAL VISITS), SCHNUCKS (1.4M ANNUAL VISITS), AND PETSMART (236.5K ANNUAL VISITS)
- PLEASE CALL BROKERS FOR PRICING AND ADDITIONAL INFORMATION

** VISITOR DATA PROVIDED BY PLACER.AI



www.LocationCRE.com

THE INFORMATION IN THIS FLYER HAS BEEN OBTAINED FROM SOURCES BELIEVED RELIABLE. WHILE WE DO NOT DOUBT ITS ACCURACY, WE HAVE NOT VERIFIED IT AND MAKE NO GUARANTEE ABOUT IT. IT IS YOUR RESPONSIBILITY TO INDEPENDENTLY CONFIRM ITS ACCURACY AND COMPLETENESS. ANY PROJECTIONS, OPINIONS, ASSUMPTIONS OR ESTIMATES USED ARE FOR EXAMPLE ONLY AND DO NOT REPRESENT THE CURRENT OR FUTURE PERFORMANCE OF THE PROPERTY. THE VALUE OF THIS TRANSACTION TO YOU DEPENDS ON TAX AND OTHER FACTORS WHICH SHOULD BE EVALUATED BY YOUR TAX, FINANCIAL AND LEGAL ADVISORS. YOU AND YOUR ADVISORS SHOULD CONDUCT A CAREFUL, INDEPENDENT INVESTIGATION OF THE PROPERTY TO DETERMINE TO YOUR SATISFACTION THE SUITABILITY OF THE PROPERTY FOR YOUR NEEDS.



3144 S. KINGSHIGHWAY BLVD

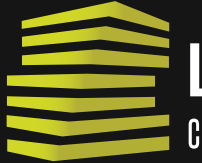
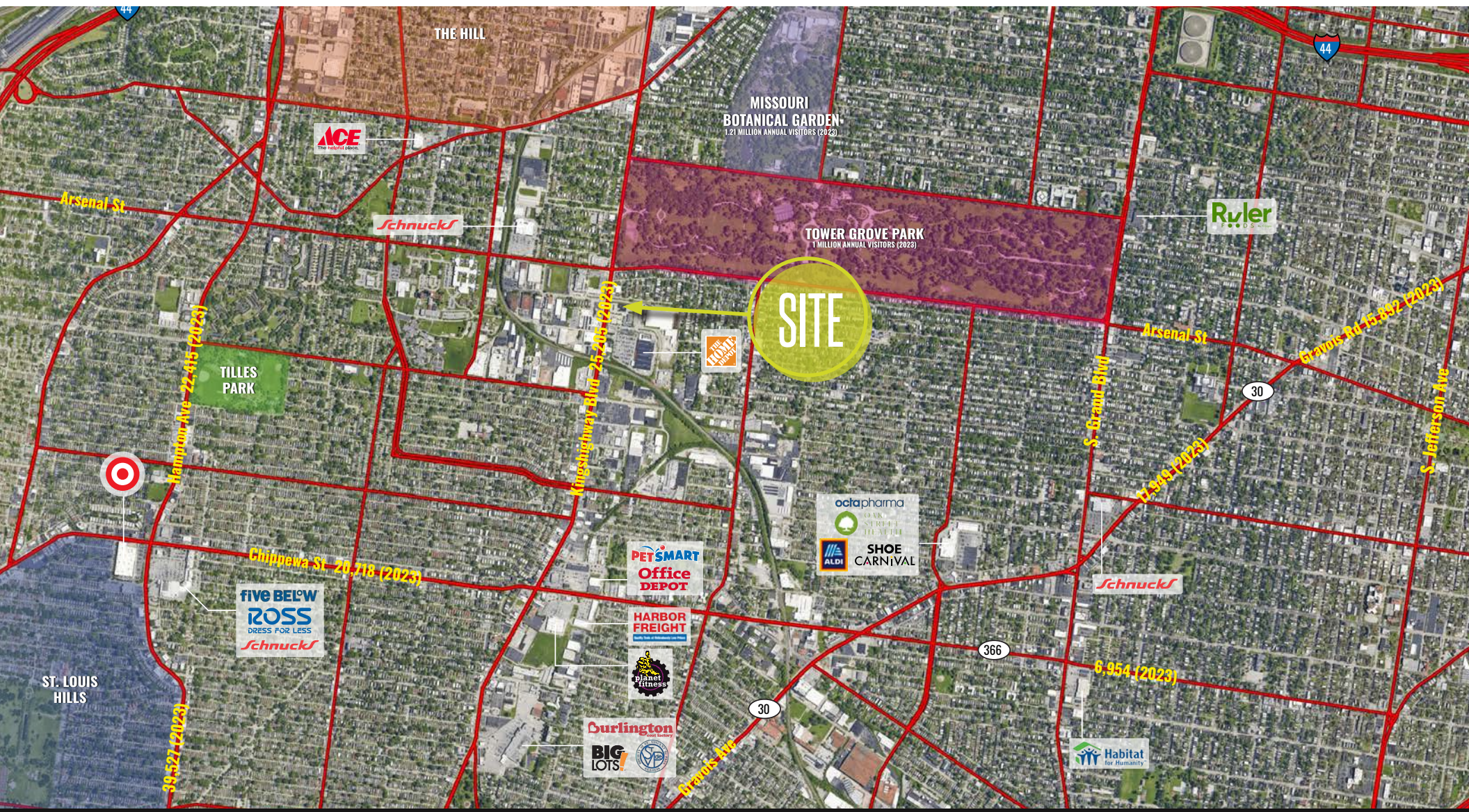
MARKET AERIAL

JOE LODES

314.818.1564 (OFFICE)
314.852.8234 (MOBILE)
Joe@LocationCRE.com

KEVIN SHAPIRO

314.818.1550 (OFFICE)
314.283.4691 (MOBILE)
Kevin@LocationCRE.com



LOCATION.

commercial real estate



www.LocationCRE.com

THE INFORMATION IN THIS FLYER HAS BEEN OBTAINED FROM SOURCES BELIEVED RELIABLE. WHILE WE DO NOT DOUBT ITS ACCURACY, WE HAVE NOT VERIFIED IT AND MAKE NO GUARANTEE ABOUT IT. IT IS YOUR RESPONSIBILITY TO INDEPENDENTLY CONFIRM ITS ACCURACY AND COMPLETENESS. ANY PROJECTIONS, OPINIONS, ASSUMPTIONS OR ESTIMATES USED ARE FOR EXAMPLE ONLY AND DO NOT REPRESENT THE CURRENT OR FUTURE PERFORMANCE OF THE PROPERTY. THE VALUE OF THIS TRANSACTION TO YOU DEPENDS ON TAX AND OTHER FACTORS WHICH SHOULD BE EVALUATED BY YOUR TAX, FINANCIAL AND LEGAL ADVISORS. YOU AND YOUR ADVISORS SHOULD CONDUCT A CAREFUL, INDEPENDENT INVESTIGATION OF THE PROPERTY TO DETERMINE TO YOUR SATISFACTION THE SUITABILITY OF THE PROPERTY FOR YOUR NEEDS.